


# Clinical Guideline

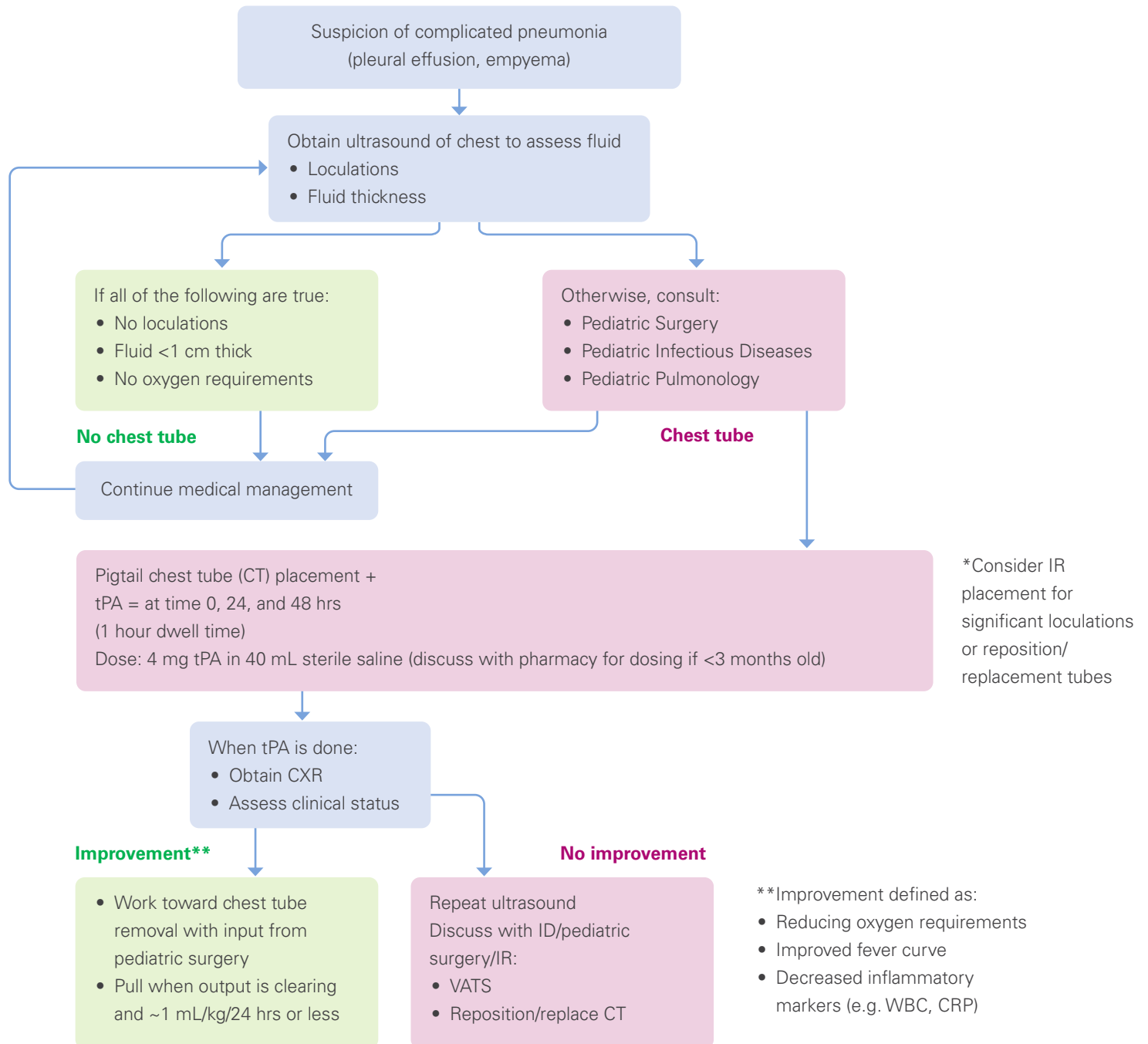
## Complicated pneumonia

Pediatric emergency, acute care and critical care medicine

 This guideline should not replace clinical judgment.

Please refer to Community-Acquired Pneumonia guidelines for antibiotic regimen(s)

Antibiotics: Ceftriaxone + Vancomycin



# Clinical Guideline

## Complicated pneumonia

### Pediatric emergency, acute care and critical care medicine

---

 This guideline should not replace clinical judgment.

Please refer to Community-Acquired Pneumonia guidelines for antibiotic regimen(s)  
Antibiotics: Ceftriaxone + Vancomycin

#### **Contraindications to chest tube, fibrinolytics:**

(Consider heme/onc consult if platelets <100k, family history of bleeding)

- Parenchymal abscess or necrosis present
- Thrombocytopenia (<50k)
- Active bleeding, concern for bleeding
- Previous history of hemorrhage
- Patient on systemic anticoagulation
- tPA should be placed by an experienced provider only

#### **PICU admission**

- Meets any of "severe" criteria in CAP guideline (e.g. O<sub>2</sub> sat <90% on up to 50% FiO<sub>2</sub>; apnea, bradypnea, hypercarbia)
- Need for mechanical ventilation or non-invasive positive pressure ventilation; concern for impending respiratory failure
- Systemic signs of shock, including: fluid refractory shock, hypotension, sustained tachycardia, need for vasopressors and/or inotropes
- Toxic or septic appearing and/or altered mental status

#### **Pleural fluid testing**

- Gram stain, culture
- Cell count with differential
- NOT typically needed: pH, glucose, protein, LDH

# Complicated Pneumonia Guideline

## Executive Summary

---

### Children's Hospital of Richmond at VCU Pneumonia Workgroup

Pediatric Hospital Medicine Owner: Amy Spinella, MSN, RN, CPNP-PC

**Pediatric Hospital Medicine Owner:**

Ashlie Tseng, MD

**Pediatric Emergency Medicine:**

Rashida Woods, MD

**Pediatric Surgery:**

Jason Sulkowski, MD

Laura Boomer, MD

### Approved (November 2022)

**Chief of Pediatric Emergency Medicine:**

Frank Petruzella MD, MS

**Chief of Pediatric Hospital Medicine:**

David Marcello, MD

**Chief of Pediatric Pulmonary Medicine:**

Michael Schechter, MD, MPH

**Chief of Pediatric Infectious Diseases:**

Suzanne Lavoie, MD

**Pediatric Intensive Care Medical Director:**

Mark Marinello, MD

### References:

**Guidelines Reviewed:**

1. deBenedictis FM, Kerem E, Chang AB, Colin AA, Zar HJ, Bush A. Complicated pneumonia in children. *Lancet*. 2020; 396:786-98.
2. Bradley JS, Byington CL, Shah SS, Alverson B, Carter ER, Harrison C, et al. The Management of Community-Acquired Pneumonia in Infants and Children Older Than 3 Months of Age: Clinical Practice Guidelines by the Pediatric Infectious Diseases Society and the Infectious Diseases Society of America *Pediatric Community Pneumonia Guidelines* *Clin Infect Dis* 2011;53(1 October):e25. *Clin Infect Dis* [Internet]. 2011 [cited 2019 Jul 18];53(7):25–76. Available from: <https://academic.oup.com/cid/article-abstract/53/7/e25/424286>
3. Gasior AC, Knott EM, Sharp SW, Ostlie DJ, Holcomb GW, St. Peter SD. Experience with an evidence-based protocol using fibrinolysis as first line treatment for empyema in children. In: *Journal of Pediatric Surgery*. 2013. p.1312–5.
4. Islam S, Calkins CM, Goldin AB, Chen C, Downard CD, Huang EY, et al. The diagnosis and management of empyema in children: A comprehensive review from the APSA outcomes and clinical trials committee. Vol. 47, *Journal of Pediatric Surgery*. 2012. p. 2101–10.
5. Moral L, Reyes S, Toral T, Ballesta A, Cervantes E. Management of parapneumonic pleural effusion and empyema in children: A tale of two cities. *Pediatric Pulmonology*. 2022; 57:2546-48.

# Complicated Pneumonia Guideline

## Executive Summary

---

### Citation

*Title:* **Complicated Pneumonia Guideline**

*Authors:*

Children's Hospital of Richmond at VCU

Jason Sulkowski, MD

Ashlie Tseng, MD

Jeffery Donowitz, MD

Mark Marinello, MD

Laura Boomer, MD

*Date:* **November 2022**

*Retrieval website:* <http://www.chrichmond.org/clinical-guideline-Complicatedpneumonia>

*Example:* Children's Hospital of Richmond at VCU. Sulkowski J, Tseng A, Donowitz J, Marinello M, Boomer L., Complicated Pneumonia Guideline. Available from: <http://www.chrichmond.org/clinical-guideline-Complicatedpneumonia>